

THERMOHYGROMETER CODE 9361-T65



- Measure humidity, ambient temperature, dew-point temperature and wet bulb temperature
- Min/Max/Average, data hold function
- Display backlight
- Auto power off

SPECIFICATION

Function	Measuring range	Resolution	Accuracy
Ambient temperature	-20°C~60°C/-4°F~140°F	0.1°C/0.1°F	±1°C/2°F
Wet bulb temperature	-20°C~60°C/-4°F~140°F		
Dew-point temperature	-10°C~50°C/14°F~122°F		
Humidity	0~99.9%RH	0.1%RH	±5%RH
Date storage	99 groups		
Auto power off	30 minutes		
Weight	190g		
Dimension	180×60×33mm		
Power supply	3×AAA battery		



STANDARD DELIVERY

Main unit	1 pc
Battery (AAA)	3 pcs

LUX METER CODE 9371-L110



- Measure visible light emitted by fluorescent lamps, metal halide lamps, high voltage sodium lamps or incandescent lamps
- Min/Max, data hold
- Two units: LUX and FC
- Reading in digital and analog
- Display backlight
- Auto power off

SPECIFICATION

Measuring range	0~200000LUX (0~20000FC)
Resolution	0.1LUX (range<1000LUX), 1LUX (range≥1000LUX) 0.01FC (range<100FC), 0.1FC (range<1000FC), 1FC (range≥1000FC)
Accuracy	±4%
LED type	standard light source, white LED, red LED, yellow LED, green LED, blue LED, purple LED
Sensor	silicon photo-diode and spectral response filter
Operating temperature	0°C~40°C
Operating humidity	<80%RH
Operating altitude	<2000m
Sampling rate	about 0.5 seconds
Spectral range	320~730nm
Auto power off	10 minutes
Dimension	190×60×33mm
Weight	180g
Power supply	3×AAA battery

sensor can rotate 180°



STANDARD DELIVERY

Main unit	1 pc
Battery (AAA)	3 pcs

DATA OUTPUT

- Measure velocity, flow, temperature and relative humidity
- Velocity unit: m/s, km/h, mil/h, ft/m, ft/s, knots
- Flow unit: CMS (cubic meter per second), CMM (cubic meter per minute), CFM (cubic feet per minute)
- Temperature type: ambient, dew point, wet bulb
- Maximum and minimum modes
- Automatic power off



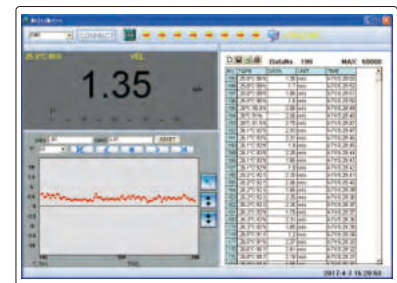
software CD (included)

**DIGITAL ANEMOMETER
CODE 9331-40**



SPECIFICATION

Measuring range	velocity	0.8~30m/s, 2.88~108km/h, 1.8~67.2mil/h, 2.62~98.5ft/s, 157.5~5900ft/m, 1.6~58.3knots
	flow	0~99.99CMS, 0~999.9CMM, 0~999.9CFM
	temperature	-10~60°C/14~140°F
	relative humidity	0~100%RH
Accuracy	velocity	±(2%+0.5) for m/s, km/h, mil/h, ft/s, knots ±(2%+50) for ft/m
	temperature	±1.5°C/±2.7°F
	relative humidity	±3% (20~80%RH), ±5% (<20%RH or >80%RH)
Resolution	velocity	0.01m/s, 0.01km/h, 0.01mil/h, 0.01ft/s, 1ft/m, 0.01knots
	flow	0.01CMS, 0.1CMM, 0.1CFM
	temperature	0.1°C/0.1°F
	relative humidity	0.1%RH
Flowing area range	0~9.999m²/0~9.999ft²	
Sampling time	0.4s	
Maximum working altitude	2000m	
Output	USB	
Power supply	9V battery	
Dimension	165×85×38mm	
Weight	200g	



software (included), display measurement values and graph, save and output data

STANDARD DELIVERY

Main unit	1 pc
Software and USB cable	1 pc
9V battery	1 pc

- Suitable for wood, smooth cement, hard gypsum, mixed mortar, brick, etc.
- Measure moisture, temperature and relative humidity
- Resistance type sensor (conductivity measurement)
- Single point and multi-point average measurement
- Max/Min mode
- Data hold
- Automatic power off
- The protection cap has a built-in standard for calibration

SPECIFICATION

Moisture	range	0~58.0%
	accuracy	±2.0%
Temperature	range	-20°C~60°C (-4°F~140°F)
	accuracy	±1.0%
Relative humidity	range	0~99.9%RH
	accuracy	±4.0%RH
Power	3x1.5V AAA batteries	
Dimension (L×W×H)	148×60×32mm	
Weight	154g	

STANDARD DELIVERY

Main unit	1 pc
Battery (AAA)	3 pcs

**WOOD MOISTURE METER
CODE 9381-160**

cap for protection and calibration (included)

